



GTYC MIDDLE DISTANCE RACE #1

NOTICE OF RACE

Sunday, May 19, 2013

RACE START IS A BERMUDA START
(Handicap up front)

[Please Register Online or by contacting
Race Chairman Jordan Owen](#)

ph-231.883.5741 -- jyowen@gmail.com

Course for Clockwise Middle Distance Race: 15.1 NM

Start -----> Between YC dock and Orange Mark*
R8-----> Port
C7-----> Port
R6-----> Starboard
R2-----> Starboard
Power Island-----> Starboard
C7-----> Starboard
R8-----> Starboard
Finish-----> Between YC dock and Orange Mark*

*STAY OUT OF MOORING AREA

- Starting time is determined by your PHRF rating
- Please find your PHRF rating (Spin or Non Spin)
- Your start time will be listed in the next column.
- When finishing, please record the boat ahead and the boat behind
- Please call, email or text the boat ahead and boat behind to Jordan Owen.

Have Fun!



GTYC MIDDLE DISTANCE RACE #2

NOTICE OF RACE

Saturday Sept 15, 2012

RACE START IS A BERMUDA START
(Handicap up front)

[Please Register online or by Contacting
Race Chairman Jordan Owen](#)

ph-231.883.5741 -- jyowen@gmail.com

Course for Counter-Clockwise Middle Distance Race: 15.1 NM

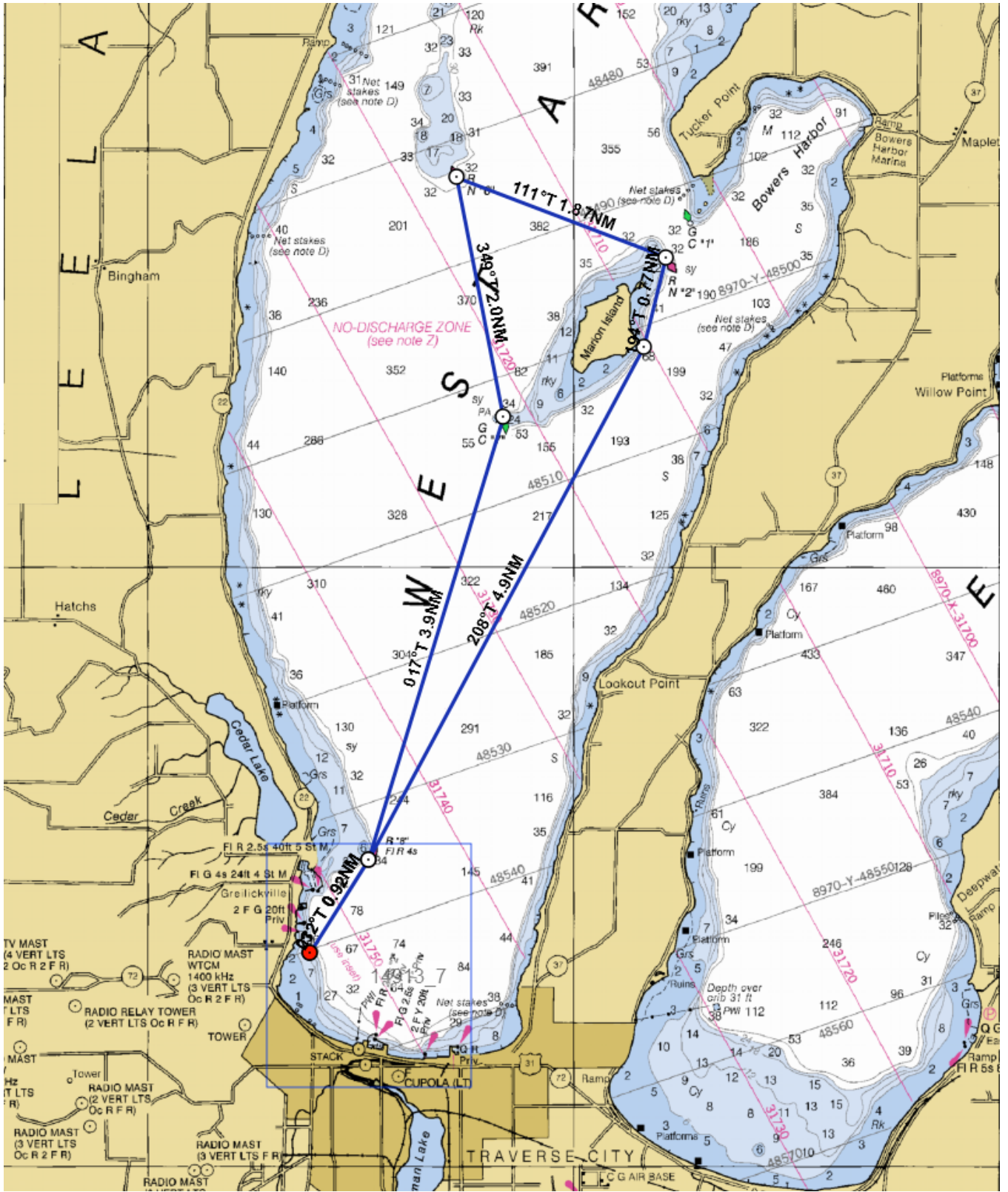
Start ----->Between YC dock and Orange Mark*
R8----->Port
Power (Marion) Island----->Port
R2----->Port
R6----->Port
C7----->Starboard
R8----->Starboard
Finish----->Between YC dock and Orange Mark*

*STAY OUT OF MOORING AREA

- Starting time is determined by your PHRF rating
- Please find your PHRF rating (Spin or Non Spin)
- Your start time will be listed in the next column.
- When finishing, please record the boat ahead and the boat behind
- Please call, email or text the boat ahead and boat behind to Jordan Owen.

Have Fun!

Socializing at the club to follow!



Bermuda Start Times

Race : 2012 Middle Distance Race #1

Course Length 15.1 nm

PHRF	h	m	s
-69	12	32	22
-24	12	21	02
-21	12	20	17
-6	12	16	31
45	12	03	41
48	12	02	55
51	12	02	10
54	12	01	25
57	12	00	39
60	11	59	54
63	11	59	09
66	11	58	23
69	11	57	38
72	11	56	53
75	11	56	08
78	11	55	22
81	11	54	37
84	11	53	52
87	11	53	06
90	11	52	21
93	11	51	36
96	11	50	50
99	11	50	05
102	11	49	20
105	11	48	35
108	11	47	49
111	11	47	04
114	11	46	19
117	11	45	33
120	11	44	48
123	11	44	03
126	11	43	17
129	11	42	32
132	11	41	47
135	11	41	01
138	11	40	16

PHRF	h	m	s
141	11	39	31
144	11	38	46
147	11	38	00
150	11	37	15
153	11	36	30
156	11	35	44
159	11	34	59
162	11	34	14
165	11	33	29
168	11	32	43
171	11	31	58
174	11	31	13
177	11	30	27
180	11	29	42
183	11	28	57
186	11	28	11
189	11	27	26
192	11	26	41
195	11	25	56
198	11	25	10
201	11	24	25
204	11	23	40
207	11	22	54
210	11	22	09
213	11	21	24
216	11	20	38
219	11	19	53
222	11	19	08
225	11	18	23
228	11	17	37
231	11	16	52
234	11	16	07
237	11	15	21
240	11	14	36
298	11	00	00

